



**MONKHOUSE PRIMARY SCHOOL UNIFORM ORDER FORM**

Child's Name ..... Class .....

- **SCHOOL SWEATSHIRT - Red with embroidered school name logo PRICE £11.00**

Size (age)	2 Yr	3-4	5-6	7-8	9-10	11-12	13 years	Sml	Med
Quantity Req'd									

- **SCHOOL SWEAT-CARDI - Red with embroidered school name logo PRICE £11.00**

Size (age)	2 Yr	3-4	5-6	7-8	9-10	11-12	13 years	Sml	Med
Quantity Req'd									

- **SCHOOL POLO SHIRT - White with embroidered school name logo PRICE £9.00**

Size (age)	2 Yr	3-4	5-6	7-8	9-10	11-12	13 years	Sml	Med
Quantity Req'd									

- **SCHOOL P.E T-SHIRT - Red with embroidered school name logo PRICE £6.00**

Size (age)	3-4	5-6	7-8	9-10	11-13	Sml	Med
Quantity Req'd							

- **SCHOOL P.E TRACKSUIT JACKET - Joma Brand Red with embroidered school logo PRICE £14.50**

Size (age)	6XS (4-5 yr old)	5XS (5-6 yr old)	4XS (7-8 yr old)	3XS (9-10 yr old)	2XS (11-12 yr old)	XS (12-13 yr old)	1/2 Zip Jacket (tick ✓)	OR	Full Zip Jacket (tick ✓)
Quantity Req'd									

- **SCHOOL P.E TRACKSUIT BOTTOMS - Joma Brand - Black PRICE £13.50**

Size (age)	6XS (4-5 yr old)	5XS (5-6 yr old)	4XS (7-8 yr old)	3XS (9-10 yr old)	2XS (11-12 yr old)	XS (12-13 yr old)
Quantity Req'd						

**Red Book Bags £6.00** .....

✂.....

**RECEIPT:**

Please complete all sections of the form and return the two sections to School Office.

Name of Child(ren) ..... Class .....

Payments should be made via the School Gateway app. Once you have placed your order, the office will create a payment request on the app. We ask that this is paid as soon as possible. Items will not be able to be ordered/collected unless they have been paid in advance via the app. Thank you

Signature of Parent/Guardian .....

P.T.O for Size Charts



**MONKHOUSE PRIMARY SCHOOL UNIFORM ORDER FORM**

Child's Name ..... Class .....

- **SCHOOL SWEATSHIRT - Red with embroidered school name logo PRICE £11.00**

Size (age)	2 Yr	3-4	5-6	7-8	9-10	11-12	13 years	Sml	Med
Quantity Req'd									

- **SCHOOL SWEAT-CARDI - Red with embroidered school name logo PRICE £11.00**

Size (age)	2 Yr	3-4	5-6	7-8	9-10	11-12	13 years	Sml	Med
Quantity Req'd									

- **SCHOOL POLO SHIRT - White with embroidered school name logo PRICE £9.00**

Size (age)	2 Yr	3-4	5-6	7-8	9-10	11-12	13 years	Sml	Med
Quantity Req'd									

- **SCHOOL P.E T-SHIRT - Red with embroidered school name logo PRICE £6.00**

Size (age)	3-4	5-6	7-8	9-10	11-13	Sml	Med
Quantity Req'd							

- **SCHOOL P.E TRACKSUIT JACKET - Joma Brand Red with embroidered school logo PRICE £14.50**

Size (age)	6XS (4-5 yr old)	5XS (5-6 yr old)	4XS (7-8 yr old)	3XS (9-10 yr old)	2XS (11-12 yr old)	XS (12-13 yr old)	1/2 Zip Jacket (tick ✓)	OR	Full Zip Jacket (tick ✓)
Quantity Req'd									

- **SCHOOL P.E TRACKSUIT BOTTOMS - Joma Brand - Black PRICE £13.50**

Size (age)	6XS (4-5 yr old)	5XS (5-6 yr old)	4XS (7-8 yr old)	3XS (9-10 yr old)	2XS (11-12 yr old)	XS (12-13 yr old)
Quantity Req'd						

**Red Book Bags £6.00** .....

✂.....

**RECEIPT:**

Please complete all sections of the form and return the two sections to School Office.

Name of Child(ren) ..... Class .....

Payments should be made via the School Gateway app. Once you have placed your order, the office will create a payment request on the app. We ask that this is paid as soon as possible. Items will not be able to be ordered/collected unless they have been paid in advance via the app. Thank you

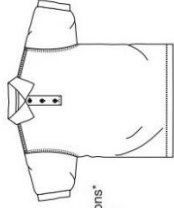
Signature of Parent/Guardian .....

P.T.O for Size Charts

## White Polo Shirts

### Penthouse Polo

- Ref: 3PP
- Easy care 65% Polyester / 35% Cotton
  - 200-210 gsm
  - Unique anti-pill fabric
  - Taped neck seam
  - Razor sharp plackets
  - Flat knit collar and ribbed cuffs
  - Mock horn buttons with optional self coloured buttons\*
  - Tight knit makes it ideal for embroidery and printing



Child-VAT Zero Rated

TO FIT CHEST**	22	24	26	28	30	32	34
AGE	2yrs	3/4	5/6	7/8	9/10	11/12	13

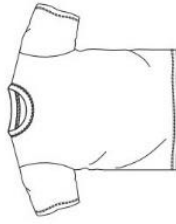
Adult-VAT Standard Rated

TO FIT CHEST**	36	39	43	47	51	56
SIZE	S	M	L	XL	XXL	60's

## Red PE T-Shirts

### Champion T-Crew neck T-shirt

- Ref: 3TC
- 100% Cotton
  - 165 gsm
  - Ring spun combed Cotton
  - Ideal for embroidery and printing
  - Ribbed neckband
  - Open hemmed sleeves
  - Taped neck seam
  - Consistent colours and fabric



Child-VAT Zero Rated

TO FIT CHEST**	23	24	26	28	30	32
AGE	2yrs	3/4	5/6	7/8	9/10	11/13

Adult-VAT Standard Rated

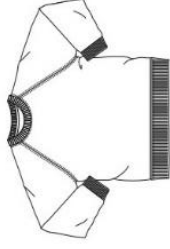
TO FIT CHEST**	35	38	42	46	51
SIZE	S	M	L	XL	XXL

## Size Charts

## Red Sweatshirts

### Select Raglan-Crew neck sweatshirt

- Ref: 3SR
- 65% Cotton / 35% Polyester
  - 320-340 gsm
  - Ribbed welt and cuffs
  - Soft but durable



Child-VAT Zero Rated

TO FIT CHEST**	25	26	28	30	32	34
AGE	3/4	5/6	7/8	9/10	11/12	13

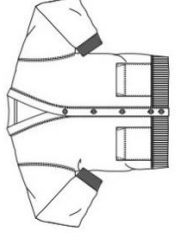
Adult-VAT Standard Rated

TO FIT CHEST**	36	39	43	47	51
SIZE	S	M	L	XL	XXL

## Red Cardigans

### Select Cardigan-Drop shoulder swi

- Ref: 3SC
- 65% Cotton / 35% Polyester
  - 320-340 gsm
  - Ribbed welt and cuffs
  - Two patch pockets



Child-VAT Zero Rated

TO FIT CHEST**	22	25	26	28	30	32	34
AGE	2yrs*	3/4	5/6	7/8	9/10	11/12	13

Adult-VAT Standard Rated

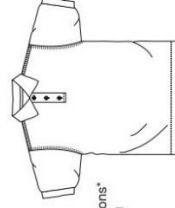
TO FIT CHEST**	36	39	43	47	51
SIZE	S	M	L	XL	XXL

## Size Charts

## White Polo Shirts

### Penthouse Polo

- Ref: 3PP
- Easy care 65% Polyester / 35% Cotton
  - 200-210 gsm
  - Unique anti-pill fabric
  - Taped neck seam
  - Razor sharp plackets
  - Flat knit collar and ribbed cuffs
  - Mock horn buttons with optional self coloured buttons\*
  - Tight knit makes it ideal for embroidery and printing



Child-VAT Zero Rated

TO FIT CHEST**	22	24	26	28	30	32	34
AGE	2yrs	3/4	5/6	7/8	9/10	11/12	13

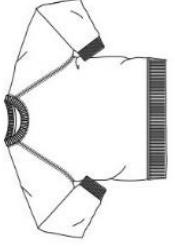
Adult-VAT Standard Rated

TO FIT CHEST**	36	39	43	47	51	56
SIZE	S	M	L	XL	XXL	60's

## Red Sweatshirts

### Select Raglan-Crew neck sweatshi

- Ref: 3SR
- 65% Cotton / 35% Polyester
  - 320-340 gsm
  - Ribbed welt and cuffs
  - Soft but durable



Child-VAT Zero Rated

TO FIT CHEST**	25	26	28	30	32	34
AGE	3/4	5/6	7/8	9/10	11/12	13

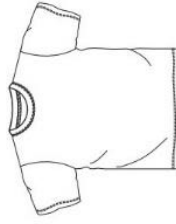
Adult-VAT Standard Rated

TO FIT CHEST**	36	39	43	47	51
SIZE	S	M	L	XL	XXL

## Red PE T-Shirts

### Champion T-Crew neck T-shirt

- Ref: 3TC
- 100% Cotton
  - 165 gsm
  - Ring spun combed Cotton
  - Ideal for embroidery and printing
  - Ribbed neckband
  - Open hemmed sleeves
  - Taped neck seam
  - Consistent colours and fabric



Child-VAT Zero Rated

TO FIT CHEST**	23	24	26	28	30	32
AGE	2yrs	3/4	5/6	7/8	9/10	11/13

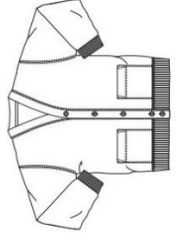
Adult-VAT Standard Rated

TO FIT CHEST**	35	38	42	46	51
SIZE	S	M	L	XL	XXL

## Red Cardigans

### Select Cardigan-Drop shoulder swi

- Ref: 3SC
- 65% Cotton / 35% Polyester
  - 320-340 gsm
  - Ribbed welt and cuffs
  - Two patch pockets



Child-VAT Zero Rated

TO FIT CHEST**	22	25	26	28	30	32	34
AGE	2yrs*	3/4	5/6	7/8	9/10	11/12	13

Adult-VAT Standard Rated

TO FIT CHEST**	36	39	43	47	51
SIZE	S	M	L	XL	XXL

## Joma Kids Tops & Bottoms

## PE Tracksuits

Joma Kid's Tops and Bottoms	Age	Height (cm)	Bust (cm)	Waist (cm)	Hips (cm)
6XS	4-5	100-108	55-57	54-55	60-62
5XS	5-6	109-117	58-61	56-57	63-65
4XS	7-8	118-128	62-66	58-60	66-68
3XS	9-10	129-140	67-72	61-64	69-74
2XS	11-12	141-152	73-79	65-68	75-80
XS	12-14	153-164	80-87	69-72	81-86

## Joma Kids Tops & Bottoms

## PE Tracksuits

Joma Kid's Tops and Bottoms	Age	Height (cm)	Bust (cm)	Waist (cm)	Hips (cm)
6XS	4-5	100-108	55-57	54-55	60-62
5XS	5-6	109-117	58-61	56-57	63-65
4XS	7-8	118-128	62-66	58-60	66-68
3XS	9-10	129-140	67-72	61-64	69-74
2XS	11-12	141-152	73-79	65-68	75-80
XS	12-14	153-164	80-87	69-72	81-86